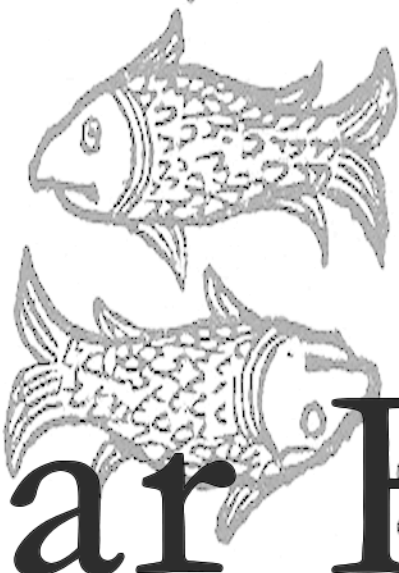


♒ Aquarius

♓ Pisces

♈ Aries

♉ Taurus



Solar Return

♌ Gemini

♍ Cancer

♊ Leo

♍ Virgo



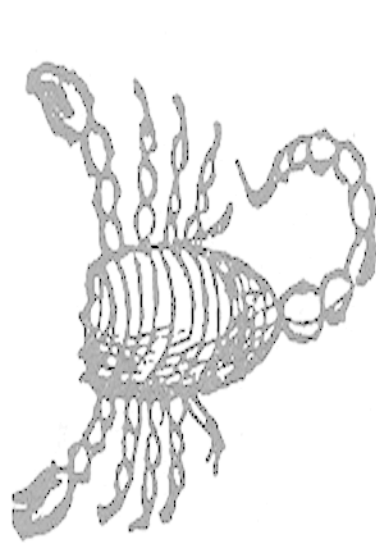
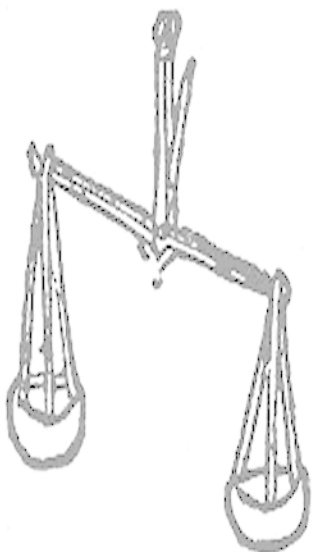
Report

♎ Libra

♏ Scorpius

♐ Sagittarius

♑ Capricornus



Planets in Solar Return Report for:

Frida Kahlo

July 6, 1907

8:30 AM

Coyoacan, Mexico

Solar Return calculated for:

July 5, 2015

12:18:22 PM

Coyoacan, Mexico

AstroFix | The Blog of an Astrology Addict

astrofix.net

michelle@astrofix.net

*** INTRODUCTION TO SOLAR RETURNS AND THEIR INTERPRETATION ***

What is a Solar Return Chart?

A solar return chart is a chart erected for the time that the transiting Sun returns to the position of the natal Sun. Approximately once every year the transiting Sun goes through the entire zodiac, every degree, minute, and second of each sign. When you are born, the Sun in your natal chart has a specific position in the zodiac. This position can be measured exactly. At some point in time during each subsequent year, the transiting Sun returns to this natal position, conjuncting your natal Sun. The date and time when the conjunction occurs down to the exact second of arc is the time of the solar return chart. A chart is then calculated for that date, using the time (of the transiting Sun's

return to your natal Sun's position), and your location (longitude and latitude) at the time of the conjunction.

Tropical, Placidus, Nonprecessed Solar Return

There are many different types of solar return charts: tropical, sidereal, precessed, and nonprecessed. This report is based on research using tropical, Placidus or Koch, nonprecessed solar return charts. Interpretations are very similar to natal interpretations and this should make the material more understandable to both the professional and amateur astrologer.

Solar Return Location

The solar return chart is generally calculated for your location at the time of the Sun's return. This may occur on your birthday, or the day before or after. During leap years, it sometimes occurs two days before your birthday. If you are going to be away or traveling near your birthday, calculate the time of the Sun's return before you leave so you can note your position the exact moment of the solar return.

You can also calculate the chart for your natal birth location even if you no longer live there. The natal location solar return chart is not as definitive as the relocation solar return, but it can give you good information. The natal location solar return is like a progressed or solar arc chart; you are born with it. Therefore, a natal solar return cannot and will not reflect any free will choices you might have made regarding where you live or where you are when the sun returns. It is a good chart, but it does not mirror the whole picture, especially if you have moved a great distance.

Some individuals prefer the chart calculated for their place of residence regardless of where they are located at the time of the Sun's return. This chart can be useful also, but again, it tends to be secondary to the chart of your actual location at the time of the Sun's return to its natal zodiacal

position.

Some individuals relocate for a short period of time, usually about 24 hours, to adjust the house placements of the planets in the solar return. Those who calculate the chart for where they are at the time of the transiting Sun's conjunction to the natal position sometimes travel to other locations to change the yearly interpretation. The relocation adjusts the angles and cusps, orienting the planets into different houses. The zodiacal degrees and aspects of the planets remain the same, but because of the different planetary placements different areas of life are emphasized. The free will choice to make this adjustment seems to bring this chart closest to the truth.

Period of the Solar Return's Significance

The significance of the solar return runs birthday to birthday with a three month overlap at the beginning and end of each year. The symbolism of the new solar return can be felt as much as three months before the birthday by very intuitive people. Usually, at this time, one becomes aware of new directions, opportunities, and problems. Many times there is even an event exactly three months before the birthday which triggers awareness and signals the beginning of the new solar return. This event is usually very much related to the new solar return and very much out of context with the old one. If you have plans to travel overseas during the three months before your birthday, do not look for the event in the old solar return even if you have been planning to take the trip all year. The old solar return will probably indicate the planning stage, but the new solar return will indicate the trip. The trip itself illustrates change, and since it occurs in the three months before your birthday, it will most likely be indicative of the new solar return chart.

On the other hand, the significance of the old solar return may not feel passé until three months after your birthday. The old themes and issues which you have worked with for the year should begin to lose their importance just as the new solar return starts to manifest itself. As your attention naturally shifts to new themes and issues, previous concerns are phased out. This is

especially true if you experience a sense of completion relevant to the old tasks. However, there are times when the old solar return drags on. If you are working on a major project for the year, it may be impossible to complete it within the one year time span. If you normally procrastinate and avoid making decisions, tasks associated with the old solar return can easily last past your birthday and into the first three months of the new solar return year. Unresolved issues carried over from year to year become stumbling blocks to further advancement and development. Individuals who consistently avoid facing the real issues in their lives accumulate major problems which are very difficult to handle.

The important thing to remember about solar returns, and life experiences in general, is that they are part of a cumulative process. The more attentive and productive you are this year, the greater your options next year. The less you accomplish now, the more limited you will feel as time goes by. Unlike transits which can seem disconnected and singular, solar returns are closely aligned and can easily be viewed as building blocks, one upon the other, year after year. For this reason, each year becomes important and each task has a history and a future. The rhythmic pattern of the solar return helps us to see this.

The main transitional month for the change from the old solar return to the new solar return is the month directly preceding the birthday. Issues related to the old solar return are resolved at this time unless they drag on (as explained above), or they are part of the new solar return as well. Issues related to the new solar return become more pressing during this transitional month and are certainly full blown by the birthdate. Sometimes the new solar return simply gains strength during the three months before your birthday and sometimes it comes in with a bang on or near your birthday. Rarely does it happen that a solar return chart starts to change manifestation later in the year. Themes in the chart usually persist for the entire year, but once in a great while one new theme will appear later than expected. In every case, the new theme can be seen in the solar return chart, yet it lay there inactive for some unknown reason. An external event is the triggering mechanism used to activate this inert awareness, and the event generally occurs within the three months following the

birthday. It can be hypothesized that unconscious factors help to avoid full involvement with this new issue until such time as it is associated with an external event of importance and thereafter becomes very obvious.

Planets conjunct a house cusp within a few degrees may be read in both houses. It is especially important to read outer planets in both houses since they eventually transit or retrograde into the other house, indicating dual or shifting concerns during the year. The more planets that are in a solar return house, the more emphasized that area of life will be during the coming year, especially if the Sun is one of the planets present. Four or more planets in any one house indicate a strong need to be involved with those themes and issues. But the individual may become so focused on this one area of life that perception is distorted and these themes are overemphasized. He or she may not want to think about anything else or accomplish tasks in other areas. The overloaded house becomes a symbol for obsessive preoccupation or emotional overload.

*** Astrological Data of Birth ***

The birth chart is a map of the positions of the planets at the time and place of birth. For the benefit of students of astrology, these positions and other technical information is listed below:

Sun 13 Can 23	Neptune 12 Can 24
Moon 29 Tau 43	Pluto 23 Gem 45
Mercury 6 Leo 20	Asc. 23 Leo 31
Venus 24 Gem 20	MC 0 Tau 00
Mars 13 Cap 24	2nd cusp 0 Vir 00
Jupiter 20 Can 26	3rd cusp 0 Lib 00
Saturn 27 Pis 27	5th cusp 0 Sag 00

Uranus 10 Cap 37 6th cusp 0 Cap 00

Tropical Whole Sign Local Time observed

July 6, 1907 8:30 AM

GMT: 15:06:40 Time Zone: 0 hours West

Lat. and Long. of birth place: 19 N 20 99 W 10

Astrological Data of Solar Return:

Sun 13 Can 23 Neptune 9 Pis 40

Moon 1 Pis 45 Pluto 14 Cap 17

Mercury 24 Gem 47 Asc. 24 Vir 09

Venus 24 Leo 24 MC 24 Gem 19

Mars 7 Can 29 2nd cusp 23 Lib 25

Jupiter 22 Leo 27 3rd cusp 23 Sco 54

Saturn 28 Sco 53 5th cusp 24 Cap 30

Uranus 20 Ari 20 6th cusp 24 Aqu 41

July 5, 2015 GMT: 17:18:22

Coyoacan, Mexico 19 N 20 99 W 10

Aspects and orbs:

Sun and Moon only All other planets

Conj. : 8 Deg. 00 Min. 7 Deg. 00 Min.

Oppos. : 6 Deg. 00 Min. 6 Deg. 00

Square : 6 Deg. 00 Min. 6 Deg. 00 Min.

Trine : 6 Deg. 00 Min. 6 Deg. 00 Min.

Sextile: 5 Deg. 00 Min. 4 Deg. 00 Min.

Copyright information:

Report and Text © Copyright Mary Shea and Cosmic Patterns Software, Inc.

The content of this report is protected by Copyright law.

By purchasing this report you agree to comply with this Copyright.

ELEMENTS, MODES, QUADRANTS, AND RETROGRADE PLANETS

Zero or One Earth Planet

While the preponderance of earth is generally associated with attention to financial matters, the lack of earth is more closely associated with financial limitations. Implied is a lack of money, through a loss of income, mismanagement, or self-imposed limitations. If you usually have money problems, then the lack of earth in the solar return chart can indicate increasing or continuing economic difficulties during the coming year. You may find that you have reached your credit limit and can no longer spend money without planning. You will not necessarily have employment problems also, though sometimes that is the case. The lack of earth in the solar return chart suggests a lack of attention to financial concerns which can eventually lead to significant debt and overextension.

On the other hand, this is an excellent time to budget. Those individuals who are able to set their own limits use this time to become artificially poor and live on less money than earned. The lack of earth can indicate the desire to impose a strict system for saving money toward a large purchase such as a down payment on a home. In this case, the monetary pinch comes from your own savings program and not a lack of real funds or impinging debts. You can channel your money into various projects and expenses, leaving less to play with. If you are very concerned with your

future financial security, vow to do something about it now.

For some individuals, the lack of money will not be a problem. You can place a greater emphasis on intangibles and therefore money is not a top priority. The quality of life is more important than the current financial state. If you are unhappy with your job, this is a good time to quit since career satisfaction will be more important to you than the salary you are paid. You are capable of living on less.

Zero or One Air Planet

The lack of air in a solar return chart is associated with several different manifestations, but basically only one underlying personality trait. It implies that rational thinking is not the major component of your decision-making process during this year. Depending on what other element is emphasized, you may be very practical (earth), emotional (water), or inspired (fire). Because of the lack of air, you might not be objective. A personal perspective will predominate. Without the lightness of the air quality, you might take life too seriously.

Charts with little or no air can also indicate a year of little forethought. You may be impulsive, jumping first, thinking later. You respond to external events in a reactive way rather than planning your moves, especially if the water element is prominent. These reactions may be unconscious knee-jerk reflexes rather than considered responses formulated after a clear perception and assessment of the situation.

This lack can indicate inexperience if you are involved in a new activity or unfamiliar situation. Hence, it follows that you do not have the experience or knowledge necessary for what you are trying to accomplish. For example, suppose you buy an older home that needs a lot of renovation and you've never done this type of work before. You will undoubtedly spend many hours reading books and consulting with experts as you renovate the house. You learn by trial and error. Sometimes you

do things well the first time and sometimes you do them over. For this reason, you may feel intellectually incompetent. This is not meant to imply that you cannot be successful in your endeavors this year. You can be very successful, but usually this will occur through a process of trial and error.

It is also common to feel uninformed. In its worst manifestation, it is a feeling of stupidity. But in its best manifestation, it is a thirst for knowledge and the courage to take risks attempting new tasks. This is an excellent time to gather information about new fields of interest, or to attend school.

Five or More Water Planets

The emphasis on water in your solar return is related to an increase in unconscious impulses and psychological factors. You may be more psychic or intuitive, but some negative psychological traits such as fears, phobias, dependencies, obsessions, and compulsions may pop into your behavioral repertoire. These need not cause you discomfort, but you will have a tendency to react to life from a feeling level rather than from a clear avenue of conscious thought. This is a good time to work with your feelings and create a stronger bond of nurturing and caring with others.

You are apt to be more sensitive to emotional stimuli this year. A very positive manifestation would be a love relationship. Your feelings for family, parents, children, and friends may be more poignant. But a preponderance of water can also symbolize an overwhelming emotional nature. You can lead with your heart, refuse to see things logically, and ignore your own best advice. There is a tendency to be more anxious or worried. If you feel overwhelmed by your own emotions and the problems of others, this is an excellent time to see a counselor.

THE ASCENDING SIGN IN THE SOLAR RETURN CHART

Generally speaking, the ascending sign in the solar return chart is read the same way as the

ascending sign in the natal chart. The personality characteristics innate to the zodiacal placement will come through in the solar return. Those activities ruled by the natural house of the ascending sign may also be prominent. Personality changes might be subtle, but can give you a sense of direction for the coming year. Think of it as a style change. Fashions may change from one season to the next. Though you are the same person, your appearance and mannerism shift. The same is true of the solar return Ascendant. This is your chance to work with the best that each Ascending sign has to offer.

Solar Return Ascendant Virgo :

When the solar return Ascendant is in Virgo, you understand the relationship between cause and effect, and see how things work. "If I do this, then that will happen!" This gives you the ability to make practical, intelligent decisions, and break negative behavior patterns. You are methodical, analytical, and detail oriented, but your striving for perfection can result in nervousness and anxiety. You go too far when you become judgmental. A tendency toward negativity may result from a feeling of inadequacy and can impact your health.

THE SUN IN THE SOLAR RETURN CHART

The Sun is the most significant planet in the solar return chart. Its position by house shows the most emphasized area of life during the coming year, how and where you expend the greatest amount of energy. The house placement of the Sun is reflected in the interpretation of the other planets, and may be the motivating force behind their symbolism.

Sun in 10th house:

If you want a strong career year, this is it. The Sun in the 10th house places a strong emphasis

on all career endeavors. This is a good time to push for advancement and work toward greater career fulfillment. You are more likely to make major career decisions or be recognized for professional achievements at this time. You are also more likely to be reprimanded for professional misconduct. The reputation you have developed in the past catches up with you and it can be good or bad depending on what you have or have not accomplished and your methods along the way.

If you have positive feelings about your job and have worked hard all along, push for advancement. If you have negative feelings about your job, do not let them threaten professional goals. You are better off changing jobs or starting your own business than staying in a job you hate. If you choose to remain in a difficult situation, you will find work too taxing, physically, mentally, or spiritually. Personal needs will begin to conflict with the job requirements and you will feel pulled between home, work, and relationships.

If there are aspects into the 1st house, your personality quirks might not lend themselves to career tasks, thereby threatening advancement. You can handle these conflicting feelings positively by integrating your career with your personal needs and balancing all the areas of your life.

With the Sun in the 10th house, you have a lot of control over the direction of your professional life and also the direction of your life in general. Since the 10th is the house of destiny, you can make decisions about where you are headed for the next set of years. Pick a new path or life direction. Normally the focus of attention shifts to a new area of major concern, and this focus of attention persists for several years. Changes usually relate to or affect your career, but not necessarily.

Authority issues are strong at this time. If you are the authority figure at work, you should be very mindful of managerial techniques and concepts. Your professional success is directly tied in with your ability to lead and motivate those under your control. If you are not the person in charge, then you must learn to please those who are. They are the ones who recognize and reward your hard work.

If you are self-employed, success will come from your ability to perform well and please the public. In any of these situations, how well you cope with career tasks will determine the measure of success you achieve by year's end. Your interest in learning and mastering effective business techniques at this time will help you improve your chances for success.

Your parents can influence your decisions either positively or negatively, especially if you still see them as authority figures. If you consider either your father and/or your mother an authority in your field of interest, go to them for advice. You may make decisions in spite of them, especially if you feel the need to break any authoritarian hold they might have over you. This is the time to determine your own future. You are the final authority. Great opportunities wait for those who are prepared to meet the challenge and take responsibility for their decisions.

Sun Opposition Pluto

Pluto is a slow moving planet and transits last for a number of consecutive years. Pluto square or opposite the Sun will appear in several solar returns. The most important interpretation associated with this aspect is an increased awareness of how people get, maintain, and use power to reach goals, or to control self or others. For some individuals, this is a time to study psychology; however, many will notice examples of obsessive, compulsive, phobic, or manipulative behaviors regardless of educational background. Unconscious needs are intensified and life can become more complicated. Learning to deal with life on a deeper level is the hallmark of the Plutonian consciousness.

Negatively, awareness can come through conflicts and struggle. Power usage in confrontations and everyday situations will become more obvious, but even subtle shifts in power will be evident to you as you learn to recognize psychological motivations and manipulations. Awareness is more important than the struggle itself though significant conflicts can arise. It is the awareness which gives you a greater ability to change your own life. This is meant to be a time of empowerment, but

only if you understand the hidden forces emanating from the unconscious.

Positively, awareness can come through ambition and self-control. Professional advancement and public recognition are possible depending on the career. Set goals and focus on achievement to connect with the true potential for this year. Profound changes are possible, both professionally and personally. This can be a turning point in your life. Make it count.

Sun Trine Neptune

The Sun sextile or trine Neptune indicates that the native is growing more sensitive on a number of levels. The sensitivity is meant to facilitate spiritual development. Insights and a sense of connection to others can foster compassion and forgiveness; however, some individuals might find the increased sensitivity overwhelming and confusing.

The most positive manifestations that result from the Sun sextile or trine Neptune include growing less concerned with selfish interests and more involved with helping those in need. An emotional connection is made to the plight of others as well as an intellectual awareness. This leads to greater concern for others and a better understanding of relationships. The increased sensitivity also results in newfound intuitive ability. Intuitive insights can augment decision-making ability. Solutions to problems can arise spontaneously and the native is more apt to avoid pitfalls.

Some individuals will equate greater sensitivity to greater vulnerability since they are likely to be confronted with their own human frailty or that of someone close. Sensitivity can lead to stress on an emotional level and sometimes on the physical level in the form of allergies. Being less egotistical can result in an unstructured personality which seems to lack certainty and direction. The individual can be confused or forgetful about mundane tasks or future goals. The most negative and rare manifestations lead to escapism through alcohol, drug abuse, martyrdom, dependency on others, and savior-victim type relationships.

It is important to keep in mind that the increased sensitivity experienced has a higher purpose and is meant to improve life for you and for others. You can do something positive with the insights and emotions you are experiencing.

Sun Conjunct Mars

Mars symbolizes the energy necessary for successful accomplishment. When Mars is conjunct the Sun, work on a project that requires a great deal of effort to complete. Success can come in the form of personal or professional achievement, especially if it involves original and creative work. First time projects or ambitious endeavors are also appropriate.

Relationships might be conflicted or competitive. You need to balance self-centered drives with the needs of others. When the Sun and Mars are conjunct, they can indicate considerable self-interest, and perhaps even a selfish attitude. Too much emphasis on self makes for tense relations. Others may view you as competitive when you should be a team player. You can motivate others in a positive and productive way, and that may be the best course of action.

Learn to deal with aggression, conflict, and anger in an effective rather than detrimental way. You may be stressed out and under the gun regarding tasks and responsibilities. Do not take it out on others. Think before you act. Handle negative situations positively with an eye toward fair play and productive changes. Defend your actions and decisions if need be. Defend others when you see injustice. Be an advocate, but remain calm and rational. If you let your temper flare, things can only get worse.

Less spiritual themes associated with Sun conjunct Mars involve self-destructive urges. Prolonged anger creates blockages which waste energy in a cycle of negative emotions that have no

real purpose or goal. It is better to direct efforts and also frustration into positive endeavors.

THE MOON IN THE SOLAR RETURN CHART

The solar return Moon seems to have two consistent themes throughout all of the houses. First and most simply, the Moon is associated with change and fluctuation according to its house position. Secondly, and probably more importantly, the Moon reflects the individual's emotional nature during the solar return year.

The Moon as an Emotional Indicator

While we speak of the Moon as simply an indication of one's emotional nature, the actual interpretation of the Moon is more complex than simple. The Moon is not just an indicator of feelings; one's emotional nature is a multidimensional conglomeration of feelings, temperament, needs, and unconscious responses. We cannot look at the Moon as one-sided; we must study its interpretation from a number of perspectives.

The Moon represents the individual's feelings regardless of whether or not they are expressed openly. The type of feelings you have during the year can be demonstrated by the Moon's sign, position, and aspects. The Moon's sign can be important even though the Moon has essentially only nineteen placements, because it is indicative of what the individual feels during the year and how he or she is most likely to exhibit those feelings.

The major difference between an individual's feelings and basic temperament is that feelings tend to make up one's basic temperament. The word temperament implies one's overall pattern of emotional response; it is an emotional factor that remains constant regardless of the circumstances. On the other hand, feelings imply a specific emotion in response to a particular event or situation. For example, moody people have emotional swings. Their feelings change depending whether or not

they are experiencing happy or sad events; however, their proclivity toward emotional highs and lows remains constant regardless of their particular mood at any point in time. Despite feelings of joy or depression, they still have a moody disposition. The solar return Moon's sign is generally very descriptive of your emotional temperament. It can suggest an array of emotional characteristics including moodiness, sensitivity, coldness, or enthusiasm.

Emotional needs play a crucial role in the Moon's cycle of change and emotional maturation. As explained above, the Moon moves in an understandable pattern through the solar return. During each year, the individual knows certain emotional needs must be met in order to feel secure and fulfilled. These needs, which fluctuate from year to year, cause the individual to create the variety of situations necessary for emotional maturity.

Conscious or Unconscious Emphasis

The Moon also signifies the unconscious experience. While Mercury's placement will suggest what the person is consciously thinking, the Moon's placement will suggest what the individual is experiencing on an unconscious level. Together, the Moon and Mercury (and sometimes also the Sun) symbolize the balance between conscious and the unconscious processes. We like to think that our decisions are based on the integration of rational and emotional information, but during any given solar return year, one process more than the other can influence our decisions, perceptions, and motivations. The focus of attention shifts to accommodate fluctuations in individual patterns of growth. There will be years when you lean more heavily on your emotional responses, tending to trust your instincts and follow your intuition. But there will be other years when you depend more on a logical assessment of your situation.

The emphasis on the unconscious usually indicates a year in which the native will be interested in fostering emotional connections and unconscious insights. Logic and factual information may not be meaningful within the context of present situations, which will tend to be emotional. Example

situations include (but are not limited to): involvement in counseling, therapy or self-help discussion groups; intense family situations (related to birth, child-rearing, sickness or death); and very nurturing social situations (e.g., communal living, helping the disabled, underprivileged or homeless). Emotional interactions and perceptions will naturally be more important if they are more likely to provide vital information needed to handle experiences during the coming year. An emphasis on the unconscious nature is conducive to emotional growth.

All forms of mental activity are associated with an emphasis on the conscious mind, including educational and informational activities. Teaching, learning, lecturing, and writing are several examples. An emphasis on the conscious mind is conducive to intellectual growth.

Solar Return Moon in 6th house:

The essence of the Moon's nature is change and fluctuation. Its presence in the 6th house of the solar return can denote changes in working conditions and/or health and dietary habits.

Job changes are usually minor. The Moon is more closely associated with adjustments rather than major upsets. Some appropriate examples of these minor changes might be: you change departments or offices within your company without changing your job per se; you drop your full-time hours to become a part-time employee; if you are self-employed, you may hire an assistant to help you keep up with the demands of your growing business; or if new policies and procedures are instituted at your office, your daily job routine changes. The adjustments that occur may or may not be within your control and may or may not be beneficial.

With the Moon in the 6th, you are more likely to make decisions that either directly or indirectly cause job changes. You can consciously decide to make the changes yourself, or make changes in other areas of your life which eventually cause repercussions in your job. As an example of this, you could decide to move out of the city. Since you will now live farther away from your office,

you convert a room in your house to a home office and do more work at home. It is possible that changes occurring in your job are truly out of your control. Your company may merge with another, reorganizing the offices and moving you to another department. All changes tend to be minor, even those that are beyond your control. Except in rare instances, it is unlikely that you would quit your job or get fired during this year; however, job security may be an issue. Even if the Moon is heavily aspected in the 6th house, it is more common to experience daily routine changes that are complicated and stressful rather than major career transitions.

There is a tendency to become more emotionally involved with co-workers when the Moon is in the 6th house, and if you are in a helping profession and/or have daily contact with the public, you may become more involved with those you help. This interaction includes a greater sensitivity to the needs of others while on the job. Because of your dealings with the public and co-workers, you are more apt to develop a reputation. This reputation is dependent on the quality of your work and therefore may be either good or bad.

The Moon in the 6th also implies health changes. These changes are generally minor and can be caused by physical changes in the body or adjustments in health habits or diet. Body changes are usually the result of natural biological cycles and processes. Included here are those changes resulting from puberty, pregnancy, breast feeding, aging, physical fitness, and hormonal balance or imbalance. Weight gain or loss is also possible. It is likely that you will be more mindful of what you eat even if you are not eating well. The body is more sensitive to the way food and exercise (or the lack thereof) affects you. This is not a good time to go on a strict health regimen. It is a much better time to learn health from the inside out. Be aware of what foods and activities make you feel better and which ones actually hurt your health or drain your energy. Develop a health consciousness. This year conscious changes in health habits are more likely to be made because of greater awareness of how unconscious habits affect health. Make your changes gradually and incorporate them into your new lifestyle permanently.

Any illnesses you might have during the year can relate to emotional habits you refuse to change. It is very easy for psychological problems to manifest as physical illnesses. A healthy diet is not enough. You must also have a healthy emotional life, which includes fulfilling emotional involvements and psychologically healthy environments. Relationships and work habits can affect your health, especially if you experience a lot of stress, frustration, or anger in these areas. Look at your most intimate relationships. Are these relationships assets or liabilities, fulfilling or draining? Even if you find these relationships debilitating, you have recourse. Counseling can help you improve your situation or meditation can help you cope with the stress. It is also important to evaluate your working conditions and the effect they might have on your health. You should be able to make changes here also. If you are aware of your health needs and take corrective action, you do not have to be sick. The more you ignore the situation, the more difficult it may become. See a psychological counselor or holistic health practitioner if you should feel the need. It is a good time to acquire good emotional habits.

Moon Conjunct Neptune

Moon conjunct to Neptune in the solar return chart can show increased sensitivity to life's subtleties. While Moon-Pluto contacts show greater insight into psychological influences, manipulative games, and a need for self-control, Moon-Neptune contacts indicate a greater sensitivity to feelings and needs that are not expressed openly, yet bind us all. There are both positive and negative manifestations suggested by Neptune conjunct to the Moon.

Negatively, you can be misinformed or even lied to, especially if someone is actively trying to deceive you. However, it is more likely that you will deceive yourself when there is someone important in your life who you do not truly want to understand. This person may be a family member or someone you are emotionally involved with. The Moon-Neptune house position in the solar return will give you a clue in regard to where deception, confusion, or uncertainty lies. If someone's actions mystify you, making you feel the relationship is insecure, it's likely that you do

not have a realistic perception of this person. Perhaps you do not want to know the truth. The truth might be more threatening than mystery so you allow the situation to remain clouded and do not challenge inconsistencies. Since much is left unsaid and assumed, you might fill in the gaps with your expectations rather than realistic assessments. Disillusionment is always built on dreams rather than truth. You may not see things as they are, only as you hope they would be. This continuing lack of accurate information leads to further confusion and fantasy, and is compounded by emotional estrangement. You may not be in touch with what you feel. Anxiety and excessive worry can be signals that your perceptions are not an accurate reflection of reality. It is perhaps fair to say that intuitive insights reflect truth and are never meant to augment expectations. This may represent a misuse of this newfound sensitivity.

Moon conjunct Neptune symbolizes intuitive insights, spiritual ideals, and one's sensitivity to the commonalities we share. We all suffer from human frailty; Neptune symbolizes our ability to identify with others, and see their failings as well as our own. True understanding supersedes any judgmental attitudes and paves the way for a meaningful exchange. Idealism and putting others on a pedestal diminish realistic achievements which might have been accomplished in spite of human weakness. Unrealistic expectations are defenses used to avoid facing transgressions and humanness we do not wish to see.

Positively, Moon-Neptune aspects imply connections; connections to each other and to the Universe. We can foster and improve these connections by understanding, accepting, and helping each other progress as a whole toward a better existence. This is a good time to accept people as they are, weaknesses and all. You will probably be involved in situations which give you the opportunity to increase your understanding or insight into others. As long as you do not make demands or have unrealistic expectations, you should be able to retain honest emotional contacts with those around you.

You may actually care for someone who is ill or disabled, or you could simply care for another

person more than you care for yourself and your own welfare. Moon conjunct to Neptune can be a sign of self-sacrifice. It is common to see this aspect in the charts of new mothers. The demands of caring for an infant involve a certain amount of self-sacrifice. If you work full-time to put your spouse through school, you might also have this aspect.

Self-sacrifice does not necessarily mean martyrdom. When the Moon is conjunct Neptune in the solar return, you are able to help others because you truly understand their situation. You are also able to handle emotional uncertainty. You accept relationships which are not clearly defined, and you are able to give without a guarantee of return. Going with the flow means accepting insecurity as a natural by-product of your situation. When the Moon is conjunct Neptune in your solar return chart, you need to be able to function during times of uncertainty and handle the insecurities that go with them. Trust that things can work out for the best in the end.

Moon Square Saturn

While the Moon square or opposite to Uranus suggests an inability to suppress emotional information, the Moon square or opposite to Saturn is more closely associated with emotional control. You may feel that you cannot or should not express your emotions openly, or that if you do, others will not understand. You probably lack a good emotional support system this year. If others are truly supportive, you might still feel lonely or sad, even though there is no apparent reason. If you are involved in an important project which you feel must be completed, you can work despite any emotional strain. This is a time when responsibility wins out over emotional expression.

Feeling that you can only depend on yourself and must take responsibility for your own welfare is characteristic of Moon square or opposite Saturn in the solar return. Perhaps others depend on you and you must be strong despite the pressure. You can carry a lot of responsibility. If you cannot depend on others, depend on yourself and your own resources while developing your talents and abilities.

Someone who started her own day care center had a Moon-Saturn aspect in her solar return. She worked alone to set up the center since she did not have an assistant. Her husband was fearful of the financial commitment and was less than supportive of her new business venture. There were times when she wished she could share her fears with someone who really understood.

Major decisions are made only after careful consideration, and may be associated with some sadness or stark realization. You may be asked to make important decisions on your own, not just for yourself, but also for others, and despite opposition. Choices can involve limited, either/or options with no good alternatives. You may have to give up something to get something. Delays are likely. Restrictions and frustrations are sometimes associated with Moon-Saturn aspects. In times like this, be patient. Deal with each issue as it arises. Focus on what is realistic and practical, make the best decisions you can, then take the most appropriate action. Remember, Saturn is also associated with strength, perseverance, and mastery.

Moon Trine Mars

When the Moon is sextile or trine Mars in the solar return chart, you have the option of acting on your emotions in a meaningful and fulfilling way. You are able to express your feelings clearly through the things you do and the causes you support. Actions are associated with the solar return house placement of Mars, while the feelings motivating action are related to the house placement of the Moon.

The Moon sextile or trine Mars combination is not necessarily difficult, nor must it involve your personal life. It can refer to professional endeavors. Ambition reflects the energy of this combination. Use this year to empower your career goals. On the other hand, this aspect might be a call to action. You can be motivated to respond when affected emotionally by what you see. If you are upset by conditions in a poor section of town, you might volunteer your services at a local soup

kitchen. The unpleasantness you feel compels you to look at your surroundings more closely and work to correct or improve conditions.

Though Moon-Mars aspects tend to indicate situations which are a mixed blessing, you are more likely to integrate feelings and actions with the sextile and trine aspects. In this case, ambivalence is less likely to arise. You are more apt to solve problems, create alternatives, and pursue opportunities.

MERCURY IN THE SOLAR RETURN CHART

Mercury has two basic interpretations in the solar return chart: it symbolizes what you are thinking about and your mental condition during the coming year.

What you are actually thinking about is shown by the solar return house placement of Mercury. The important thing to remember about Mercury's placement is that it is indicative of a mental exercise only. Alone in a house, Mercury can show mental preoccupation without psychological pain or physical consequences. It suggests the ability to make decisions only, and may not be a clear indication of action in any particular area. Mercury's aspects to the other planets indicate how information is gathered, assimilated and integrated into attitudes that persist for most of the year. How easily this is accomplished, and in what manner, is suggested by the aspects themselves.

Conditioning is noted by solar return aspects to Mercury. Squares and oppositions to Mercury indicate possible sources of tension and conflict. If Mercury is in an air sign, (Gemini, Libra, or Aquarius), rational thought processes are emphasized. If Mercury is in a water sign, (Cancer, Scorpio, or Pisces), strong emotional factors influence thinking. If Mercury is in an earth sign, (Taurus, Virgo, or Capricorn), the tendency is to be practical. If Mercury is in a fire sign, (Aries, Leo, or Sagittarius), the individual is motivated by self-interest, passion, philosophy, or spirituality. When assessing the conditioning of Mercury, it is also important to note the sign and conditioning

for the Moon and whether the Moon is in an air or water sign. This will help you determine if the thinking process or emotions are dominant during the year and if integration is possible.

Solar Return Mercury in 10th house:

Mercury in the 10th house is associated with decisions that will channel the direction of your life over the next few years. During the year, you will be asked to make choices that will affect your immediate and distant future. Decisions may be career-related and directly involve your present job or professional goals. You might decide to attend school or take a refresher course. On-the-job training and work-related travel are also a possibility. On the other hand, decisions might pertain to major life transitions without an emphasis on career. Important decisions such as marriage, leaving home or moving to another country can be indicated by Mercury in the 10th house. People who decide to change their life-styles totally can have this placement.

Professionally, this can be a good time to communicate with your superiors. Networking can further your advancement. Make business connections now and plan for future career developments. You may have ideas that would improve business or streamline office procedure. These creative ideas can play a crucial role in career developments over the next year. If you are already in a position of authority or willing to accept more responsibility, you might be asked to play a greater role in the decision-making process at your place of employment. If you are not in a position to change office routines where necessary, work may become more tedious. Tasks may be predominantly detail-oriented or repetitive and involve a great deal of paperwork.

Mercury Sextile Jupiter

While Mercury-Saturn aspects are associated with pessimism, Mercury-Jupiter aspects suggest optimism and confidence. You may look forward to the future with great enthusiasm. You believe anything is possible and you are willing to work to make it happen. This is a good time to expand

your business, deepen your knowledge, travel, or experience different cultures and belief systems. Those individuals who are middle aged or older might be drawn to philosophical and religious studies. It is important to practice what you preach. Say what you believe and believe what you say. Be generous with your time and knowledge. This is a good time to expand your mind. Return to school, join a discussion group, or study on your own.

Mercury Sextile Venus

When Mercury is sextile Venus in the solar return chart, you are more apt to have confidence in your decisions and intellectual capabilities. This is a wonderful time to be in school or to take a course since learning is likely to be an enjoyable experience. You may also make great progress in what most people consider to be a difficult topic or subject even if you have had trouble with in the past. Facts can be easier to comprehend during this time and the information you receive should be applicable to your present needs or skills.

Your verbal tactics include good negotiation skills. Develop a soft style for expressing your needs and getting what you want. Learn to compromise and generate win-win solutions to problems. By doing so, you will be able to retain an inner peacefulness and a relaxed state of mind.

This is a good time to cash in on money-making ideas or save money by following a financial plan. Your ideas might generate funds for you personally or for your company. Your ideas might also help you save money by cutting expenses or streamlining operations. Resources are not likely to be spent freely, but according to a plan, and with a goal in mind.

VENUS IN THE SOLAR RETURN CHART

Venus is the key to understanding your relationships and financial situation for the solar return year. Many times these two areas go hand in hand; financial security tends to be coupled with secure

relationships while financial difficulties are more likely to occur when close relationships are strained. Although this correlation is common, it is not the rule, and interpretations for finances and relationships should always be viewed separately. When assessing Venus in the chart, evaluate Venus twice, first with respect to the other relationship factors in the solar return and then with respect to the other monetary indicators. In this way, you can develop a clear picture of each area of concern.

Venus also indicates a need for comfort and it is informative to note what has preceded Venus in its present house position. If, during this year, Venus resides in a house which last year represented an area of conflict, Venus would imply an improvement in the conditions associated with that house and may indicate a healing process. Benefits commonly follow after much hard work. A Venus placement in the solar return chart following a more difficult placement during the previous year can indicate great reward. Your awareness of this possibility may encourage you to work harder in more problematic areas since you can see the rewards in the following year.

Relationships

Venus, by house, shows what relationships will be important during the coming year. For example, Venus in the 3rd house might indicate that relationships with neighbors or community involvement will be emphasized. With Venus in the 6th house, pleasant office conditions, and good co-worker relationships will be important. But the interpretation of relationships as they appear in the solar return chart involves more than an understanding of Venus' house placement. Look at the 5th and the 7th houses, especially if you are interested in a love relationship. The more planets in these houses, particularly the 7th house, the greater the need to relate on a one-to-one basis. Generally, the 5th house shows sexual affairs, while the 7th house indicates a greater commitment (though not necessarily marriage). Clandestine affairs or secret relationships are more likely to occur when Venus and/or the Moon appear in the 12th house.

One fact about marriage and the solar return chart is surprising. The solar return is not

necessarily a good indicator of a marriage during the year. The beginning of a relationship might be easily seen, but the marriage itself is more likely to be reflected in other techniques. On the other hand, postponement of a marriage or the refusal to make a commitment can be easily seen with Saturn, Uranus or Neptune in the 7th house.

Finances

Venus also relates to money and finances, and can be used to evaluate these circumstances for the coming solar return year. The house placement for Venus may indicate how you are most likely to generate income. This is sometimes true, but not always. Venus in the 9th implies a teaching salary, but if you don't teach, the emphasis will be on your beliefs concerning relationships. Don't stretch your economic interpretation of Venus' house placement. If the house position applies, the situation will be obvious. If the house position does not seem to apply to finances in particular, Venus will be more consistent with relationship situations during the year.

For finances, it is perhaps more important to look at the planetary placements in the 2nd, 6th, 10th, and 11th houses, especially if you are interested in the amount of money you will be able to earn by employment. The 2nd house is the primary money house, but it also gives indications of spending practices. Any planets in the 2nd can reflect your salary and/or your spending practices (regardless of how much money you earn); it is always possible to spend more than you make or make more than you spend.

Venus in 11th house (within 3 degree orb of 12th house)

An 11th house solar return Venus indicates you are more likely to be involved in friendships and associations with a number of people rather than in-depth relationships with only a few individuals. Your relationship style leans more heavily toward detached, less intimate forms of relating. If you are not presently involved in an intimate relationship, it is unlikely that you will form

one during this solar return period. You are more apt to be friendly with a variety of people than fulfilled by any single relationship. This placement can be associated with "playing the field." Even if you do have your eye on one particular individual, he or she may not be ready to make any kind of commitment at this time.

If you are already married or involved in a stable intimate relationship, you may want to make new acquaintances by socializing with groups of people. The focus will be on expanding your circle of friends and creating new interests. Personal freedom may be an issue and you and your partner can make changes which will increase your freedom and flexibility. If your marriage or steady relationship is strong, these changes will not have a disruptive effect. But if your relationship is weak and you question your loyalty to one person or feel very restricted by your present partnership, the push for freedom can lead to strong attractions to other people.

The 11th is the house of "why not?" and issues and conflicts related to monogamy are common. You may be tempted by an opportunity for an affair. How friendly you actually get with others is your decision. Sex is not necessarily a requirement for the variety of experiences and excitement you seek with this placement, but it may suit your needs during this time. Weak marriages can break down. Friends tend to become lovers while lovers become friends, and your ability to make a distinction becomes clouded.

Your friends can be very helpful and great sources of strength. You may depend on your friends to help you achieve your goals during the year. One woman, who started a small business, called on her friends to fill in when she needed extra hands for short periods of time. This is a good year to foster helping friendships and to network within your community. You can do this for either business or personal reasons.

You may join an organized group or attend regularly scheduled social functions. Going to meetings can fulfill two needs, giving you a wide range of social contacts while also expanding your

interests. Group involvement can be mutually beneficial, as there is room for give and take with this placement. Interactions can provide you with opportunities for personal growth or professional advancement. You may see group interaction as a way of implementing your goals. This may or may not be the case, but group members are likely to be supportive.

This can be a good time to seek a promotion or raise. The 11th house is the money house for the 10th of career. You may be rewarded for your hard work, but don't expect something for nothing. If Venus is in the 11th without strong Saturnian aspects or placements in the 10th or 11th, the promotion is more likely to involve money only, but with a Saturnian motif, you are more apt to accept extra responsibility along with the salary increase.

Venus within 3 degree orb of 12th house

When Venus is in the 12th house, it indicates that inner emotional and spiritual qualities are valued more than material success or external achievement. Real success and achievement develop through helping relationships with others and the ability to maintain your own inner peace regardless of your immediate environment or previous involvements. For those who have recently come through a difficult period, this may be a time for inner healing and comfort. Values are centered on nonphysical attributes. Outer beauty and materialism will not be valued as highly as the inner qualities you now seek or possess. Having money is not as important as the quality of life and your ability to be happy with who you are and where you are headed.

The money you already have or presently earn may not concern you; however, a lack of money in the foreseeable future may be important. Venus in the 12th is not especially secure money-wise and it is the future money that is in question. Individuals commonly feel financially uncertain with a 12th house Venus. If you are employed, you may hear rumors of salary cuts, layoffs or decreasing sales commissions, or you yourself may actually be considering a job change, thereby threatening your financial security. Those who are self-employed may not be able to estimate earnings for one

reason or another. Generally a 12th house Venus is more rumor and uncertainty than fact. If you consciously reassess your values and consider your options, you will discover that money is not the focus of your existence; other factors associated with the quality of life are more important.

Because of this internal focus, the spiritual side of your personality can grow and become more intimately involved with your interpretation of daily experiences, thereby making these daily experiences more meaningful and significant within a broader scope of understanding. This is a good time to foster spiritual evolvment through meditation and introspection. "Quiet times" may be essential to your pattern of growth, and consequently you may be socially withdrawn during the year. Being alone gives you time to focus on events, feelings and thoughts without distractions, thus enabling you to complete a process of absorption and integration.

During more sociable periods, your inner focus leads you to be attracted to people, places and things which possess inner strength and significance. Older people, grown wise with their years, and those who seem self-possessed and at peace with themselves are especially attractive to you. "Quality" social contacts are more important than "quantity."

Venus in the 12th house of the solar return also shows possible involvement in a hidden love relationship. New relationships will tend to have a clandestine quality this year. For one reason or another, you find it difficult to be openly attracted to this person. It may be that the two of you are very different and others will disapprove or one of you may have already made a commitment to someone else. Even if the relationship can be more open, the two of you may chose to spend most of your time at home alone with each other.

Involvement in a savior-victim relationship is a real danger with Venus in the 12th house. Since you are more in tune with inner qualities and emotions, you are more likely to be sympathetic and compassionate. You are able to feel the pain and suffering of those you are close to, and consequently you have a strong desire to help. Your desire to be helpful is especially strong if you are romantically

involved. It is to your advantage to help only those who are truly in need, respond to your assistance, and appreciate your help. Unless you are a mental health professional, do not seek to save the alcoholic, the drug addict or the emotionally disturbed. You are not trained to cope with these types of situations and you will be physically drained and emotionally victimized by the resulting frustration. Use your compassion wisely and don't play martyr.

Venus Trine Uranus

When Venus is sextile or trine Uranus in the solar return chart, changes in relationships may occur. For some people, this can mean a sudden attraction and the excitement of a new love. Involvements may be very strong, very quick, and may or may not have staying power. New relationships might eventually lead to marriage, but probably not during this solar return year. Loose associations are common. Friends become lovers and some love relationships seem more like friendships. Occasionally, relationships and attractions are less than conventional.

A general mood of change and transition may permeate all partnerships, whether old or new, personal or professional. Difficult relationships may end amicably, but for those in a healthy relationship, changes will occur within the relationship itself and do not indicate a break in ties or a loss of commitment to one another. For some people, the changes involve a new and exciting experience, such as the birth of a child. New skills and patterns of behavior must emerge. Other common examples of change are relocation, retirement, travel, and changes in the number of people living in the home.

Financial changes are also likely to occur with Venus sextile or trine to Uranus. You may move in with a lover, spouse, or friend and begin to share expenses. You might receive a financial windfall or pay raise. You can be working on a commission or incentive basis, or be involved in a profit-sharing plan at work. Self-employment is also possible. Starting a new business from scratch is generally a major financial adjustment. For one reason or another, the amount of money available to

you is likely to change or fluctuate.

This is a good time to be creative, both in the arts and with life. Discover hidden talents and take risks. When Venus is sextile or trine Uranus, you can be insightful and inspired. Make the best of changes and opportunities.

Venus Square to Saturn

Venus square or opposite Saturn in the solar return is associated with limits and inhibitions in regard to relationships and finances. The house placement of Saturn denotes where restrictions arise. Saturn rules structures and definitions which can support and stabilize an already strong relationship, but stressed or weakened relationships will be under a lot of pressure and may not survive. You may refuse to make a further commitment to a relationship, or it can be your partner who backs off. Statements like, "We're just friends," or "This is only an affair and I could never leave my wife," are two examples of the kind of limits associated with Venus square or opposite Saturn. Very poor relationships may end in separation and divorce.

Relationship inhibition occurs when the structure and definition of the relationship is used to limit or control rather than convey a sense of purpose and commitment. One person may become the parent partner and accept total responsibility for a second individual who is seen as the irresponsible child. In this case, the relationship loses all sense of balance and equality. Love is not given or received in a relaxed manner. It is always controlled, withheld, or rejected.

Partners who love each other and are committed, but experience a period of change and adjustment, might do well to give each other space, understanding, and support. The distance can foster individual expression and achievement. For example, if one partner wants to go back to school for a higher degree, time must be set aside for classes and study.

Financially, you will probably be working with less cash during the year. Your budget will be tight, either because you have limited funds and increased expenses, or you choose to conserve money and save money for a major purchase or to pay off debt. If you are normally very free with your money, this is a time when you are forced to be careful with spending practices. Some may experience a cutback in funds because they quit their jobs, cut back on hours, become self-employed, or experience a dramatic change in their life-style which would naturally affect funds available. This is a good time to budget, limit spending and focus on paying off debts.

Venus Conjunct Jupiter

Venus conjunct Jupiter in the solar return chart has several possible interpretations. You can benefit, either directly or indirectly, through the influence or assistance of others. Benefits are shown by the solar return house placement of Venus and Jupiter. Relationships can be very rewarding and you reap what you have sown. If you have been helpful and understanding to others in the past, you can expect the same treatment now. Your lover, business partner, or spouse may be actively supportive of your goals, both financially and emotionally. Indirect benefits can also come to you through partnerships. For example, your spouse accepts a job transfer to Colorado and you always wanted to live in ski country.

There is a tendency to be overextended financially when Venus is conjunct Jupiter. Large purchases and major expenses are common. Although additional funds might become available, money can flow out as quickly as it flows in.

What you believe to be true about most relationships can either be consistent with your experience, or in conflict with the reality of your situation. Developing a philosophy of relationships will help you make decisions regarding morals, ethics, and monogamy. You may discuss whether your relationship is an open or closed one. One partner might wish for greater freedom. Defining

the ethics of relating becomes a goal during the year.

MARS IN THE SOLAR RETURN CHART

The planet Mars represents an outward thrust of energy in a solar return chart. It is an active energy geared toward producing an external manifestation brought about through interchanges with the environment. The arrow on the symbol for Mars illustrates this outward thrust and movement. The interplay with the environment and the area of greatest energy expenditure are shown by the aspects to Mars and its house placement. There can be a number of ways in which the outward thrust of energy and activity manifests in the external environment. Positive manifestations implied by Mars include self-motivation, independent action, initiation of new projects, assertiveness, fulfilling sexual encounters, and original or pioneering creations. But anger, aggression, and sexual abuses represent negative and wasteful expenditures. Energy lost in negative exchanges cannot be used productively.

Mars, by its very nature, denotes the spark of initiation and self-motivation. Original pursuits, independent actions and new projects are fostered during the year and are typically associated with those areas of life denoted by the house placement of Mars. Because of the new endeavors and the enthusiasm generated, these areas then become the focus of energy use as the level of activity increases and you begin to feel driven to work, accomplish, and complete. Sometimes ambition and competitiveness augment the need to excel, but an energetic attitude can flow without these personality traits since self-motivation tends to spring naturally from an inner source.

During the year, activities may be specifically tied to your ability or inability to be assertive. In its most positive manifestation, the planet Mars denotes an active force. Except for a few of the more subtle interpretations for Mars, the implication is an external thrust which affects other people, places, things or circumstances. For example, if you install a home office, you make a change in your living situation. If you start your own business, you do, in effect, change the environment. If you

insist on control over your own finances, you create a more independent relationship style. In each of these cases, you are the individual initiating the activity and asserting your own needs which are essential to the task at hand. The inability to be assertive can only lead to frustrated desires and anger. Your efforts will be thwarted until you make adjustments in your thinking. When extreme frustration occurs, more energy is expended toward being angry than working toward correcting the problem.

The house position of Mars and its aspects to the other solar return planets provide information about the circumstances which will trigger angry responses in you. Anger may arise from a number of different circumstances, including, but not limited to, frustration at the inability to fulfill your own needs, aggression from others, stressful surroundings or unconscious resentment that has not been resolved. Anger is a signal that your attitude and/or environment need to change. Energy lost to anger cannot be used creatively. Anger that stimulates creative action can be recouped. Your task for the year will be to learn to deal effectively with these anger-producing situations. Do not allow anger to be triggered when insight coupled with assertiveness, tact or corrective action would suit your purposes better. As you focus on negative situations and gain understanding, you can begin to funnel your energies into the most positive manifestations.

Aggression is a distortion of assertiveness. Assertion is the defense and maintenance of your own rights; aggression is the infringement or attack on the rights of others. Anger is most likely the motivation for the attack, although psychological idiosyncrasies may provide other motivations (of which fear is the main culprit). All acts of aggression, by their very nature, should produce anger in the person attacked, though some individuals, because of their own psychological nature, respond in other ways. Where you find Mars by house position indicates where you are most likely to meet the aggressor during the coming year. Either you will have to deal with a hostile person in the environment or you will be confronted with your own acts of aggression. If you are able to meet your own needs through assertion and you know your own rights while conscientiously defending them, you are less likely to be the aggressor or allow aggressive actions to arise in others. You should

be able to strike a balance between your needs, and rights, and the needs and rights of others. In this way, you maintain your position relative to the environment. But regardless of how fair you are in your dealings with others, you may still have to defend your own rights.

Mars as an indicator of sexuality is not consistent with the interpretation for every house position. There is the possibility that sexual intrigue can apply to the situations denoted by any of the planet's placements, but the connection is not always obvious. Themes of initiation, high energy output, anger, and aggression appear more consistently. For example, Mars in the 10th may mean a sexual attraction between you and your boss, but it is more likely for you to be extremely active in career endeavors. Your boss can be a prime motivator toward career success or he could actually be very offensive and thwart your efforts. Note the aspects between Mars and your other personal planets for further information. The sexual implications of Mars seem more obvious in the relational houses, but then individual differences apply. Sexual fulfillment is directly related to the appropriateness of sexual activity given the particular situation and any restraints or inhibitions involved.

Solar Return Mars in 10th house:

Mars in the 10th house suggests an aggressive business style or energetic attitude towards career tasks. Many times the individual with this placement realizes that he or she must work harder during the coming year either to get ahead or stay ahead. Competition from other businesses or co-workers can provide the impetus towards greater productivity, but many times the individual is only in competition with himself or herself. There may or may not be a specific change in the work environment that indicates this need to switch into high gear. Internal signals are as likely as external motivations.

This is a good time to focus on career ambitions and use the energy surge for both immediate career goals and long-term developments. During the year, you should take the initiative and

capitalize on your ability to be self-motivating. Projects that require originality, independent work and/or aggressive action are suited to your style. Try new techniques, tools and directions. Use this time to initiate a project or start your own business. Professional success can result from independent efforts, and as a rule, you will prefer working alone. Specific situations which are consistent with this interpretation include: working on a commission basis and trying to land the "big deal"; attracting new clients, particularly those requiring active pursuit; and starting a new business or relocating an old one to a new area, since you must hustle to make things work, break even or move ahead.

Those who cannot find a positive outlet for this energy surge will feel frustrated with their present employer or career responsibilities. If you are not self-employed, or do not have the freedom to work independently, clashes with authority figures are likely. In some instances you can be motivated by your boss's demands, but generally, tension between you and upper management can build into a stressful situation for one reason or another. High pressure situations and workaholic tendencies are associated with this placement and if your boss is too demanding, your workload can be overwhelming or even impossible. You can accomplish a lot this year, but do not do so at the expense of your mental or physical health. Do not allow workaholic tendencies to prevent you from going on vacation. It is important that you practice relaxation techniques and take time off. It is also important to learn to control, deflect or address tension-producing issues.

In very negative situations, the stress at work is exacerbated by unreasonable or difficult authority figures. It would be best if you could work alone, since you may not like working for, with, or under anyone. The natural creative energies will be more evident if the motivation is internalized and allowed to flourish, but this is not always the case. If you must deal daily with an argumentative boss, you need to look at your professional priorities and reassess your options.

In the most positive manifestation, energy is expended toward professional achievement, but if the road to success is blocked, extreme frustration will follow. Making job or attitude changes can be the only way to open doors to more positive opportunities.

Although the 10th house is associated with career choices, this is also the house of the destiny path. New personal directions are possible while Mars is placed here, regardless of whether or not these new directions are directly tied into career choices. Occasionally this placement shows that you are able to go on in life alone. This is particular true for those individuals in the midst of a divorce. The ability to function independently while pursuing a course of action which can have a major effect on the life path is an interpretation consistent with Mars in the 10th house of the solar return chart.

Mars Trine Neptune

While Mars-Pluto aspects imply actions that are unconsciously motivated, Mars-Neptune aspects indicate actions which have no obvious motivation at all, or which involve a great deal of uncertainty as to direction and goal. When Mars is sextile or trine to Neptune, running on faith and intuition is more likely to pay off despite the uncertainty, than when Mars is conjunct, square or opposed to Neptune. You can dream big and realize your dreams in some situations.

Humanitarian pursuits are sometimes associated with this combination since very spiritual endeavors emanate from a source which is not readily apparent. This is a good time to volunteer your time and efforts for a cause or charity. You can be more sensitive to the needs of others this year. You also want your actions to have meaning and purpose. Mundane considerations might seem unimportant in light of higher pursuits. A sense of fulfillment comes from unselfish actions.

Mars sextile or trine to Neptune indicates the ability to function despite a degree of uncertainty that colors your actions. There can be reasons for this. Perhaps results are unimportant and it is the thought that counts. Though the odds might be stacked against you, you still wish to proceed. The fact that you care and act has more meaning and impact than the results. Even if you were to fail, you feel your efforts will either inspire others to join your cause, to work on their own projects, or to

succeed where you failed. Your job is to get the ball rolling. No matter what, some good will come from your efforts.

Mars sextile or trine to Neptune can also relate to everyday events. Careful planning is generally not feasible, but you can attract the resources and assistance you need. Follow your intuition and the string of opportunities as they arise. Though rumors abound at work and your job is uncertain, you will probably be alright. Matters will work out in your favor. Situations might be in limbo for a while, but can move forward. Uncertainty either works to your advantage or works out in the end. No harm; no foul. Still, be ready with alternate plans. Improvise your way to success if necessary.

If you need secrecy for your endeavors, this is a good time to prevent the left hand from knowing what the right hand is doing.

JUPITER IN THE SOLAR RETURN CHART

Jupiter has a number of possible interpretations in the solar return chart and any or all of the following meanings can manifest according to house position. First and foremost, Jupiter tends to imply a benefic event associated with its placement. How these benefits come about and the area of life affected are usually shown by the house position.

All opportunities will probably involve expansion into new areas of activity. The primary function of the Jupiter principle is to expand beyond the scope of previous experience. One is not to remain in a static condition; growth is not only implied, but expected. Jupiter's slow and consistent movement through the zodiac implies the steady growth needed to advance.

One of the most common activities associated with growth and expansion is the pursuit of an education. The impetus to learn is closely associated with any push to grow and our definition of learning in this case is not limited to a structured environment (school), but can include self-

teaching and life-experience training. Although education is not always a consideration for every Jupiter house placement, it can be considered to have an impact on any of the houses.

Areas of expansion can easily become areas of excess and this is a problem with Jupiter. Growth can be uncontrolled and purposeless, dwarfing any push for real attainment or benefit. For example, overeating may supplant a desire for nutritious food when Jupiter is in the 6th house. The weight gain takes the place of education. Already existing situations associated with any house placement of Jupiter may boil over if extreme limitations were previously the norm. This is especially true when emotions overwhelm the individual after a long period of emotional suppression. Any Jupiter placement can signal a false god. One or more activities associated with Jupiter's house may be emphasized to such a degree that a distortion of perception results, creating the false god.

Perhaps excesses are directly and proportionately related to suppressed urges. We now zoom ahead where we previously lagged behind, making up for lost time. The overwhelming impetus enables us to grow and expand at a rapid pace. The task is to avoid restricting this growth, while staying in control. The best option is one of channeled and structured enthusiasm.

A question of ethics and morals is often associated with the house placement of Jupiter. Unlike Saturn, which is more representative of societal structures and expectations, Jupiter implies the need for a philosophical (or sometimes religious) consistency between what you are doing physically and what you believe you should be doing ethically or morally. The underlying belief is always at the center of any conflict, not the external expectation. Jupiter by house indicates a desire to review those beliefs commanding a strong influence over one's philosophy of life and code of behavior. Current beliefs may be limiting future growth or freedom. Within this perspective, hypocrisy and moral dilemmas are more commonly a problem than the frustration associated with Saturnian external laws.

Jupiter in 11th house (within 3 degree orb of 12th house)

The number one issue with Jupiter in the 11th house is the issue of freedom as it relates to one or more specific areas of life. Goals are being set early in the year, and most likely the goals are meant to directly benefit the individual. The goals may include educational pursuits which will enhance career potential, but this is not always the case. In order to fulfill the goals, the individual must fight for freedom in one or more specific areas of life. The specific areas are denoted by the houses with Sagittarius and Pisces on the cusps. The symbolism of either one or both houses will work. For example, one young man wanted to attend graduate school, but his work demanded that he put in much overtime. He needed to fight for freedom from the grueling hours before he could attain the educational goal he wished for. Sagittarius ruled the 6th house and Pisces ruled the 10th. He eventually quit his job and found part-time employment.

A young woman also wanted to go to school, but needed money from relatives. Deep underlying family complexes made it very difficult for her to address the issues clearly and acquire the much-needed financing. She eventually applied for scholarships and loans and entered the school of her choice. The issue of freedom is crucial to success. If one cannot master the tasks necessary for eliminating restrictions, one will not be free to accomplish the goal. Those who are frustrated may function erratically. Freedom in this case is a negative reaction to a restrictive condition, rather than a quest for wholeness.

Friends may be crucial to the goals you set during the year. They can directly assist you or help you to make the necessary connections. It might be more important who you know than what you do, and therefore networking is to your advantage. It's possible that goals can only be accomplished through a combination of energies coming together from several different individuals. The pooling of resources enables all to succeed as a group while maintaining some measure of individual success. Group efforts and self-help programs are consistent with this placement.

Jupiter within 3 degree orb of 12th house

Jupiter in the 12th house indicates the possibility of an overwhelming influence. Many times it is the emotional nature which appears to overwhelm the individual, especially if he or she is already dealing with a difficult situation, but any area of life can be difficult to control. It sometimes occurs that one activity, person or theme overshadows all other self-expression and sets the tone for the year. The 12th house rules the unconscious, and perhaps Jupiter, the planet of growth, in this placement implies that the unconscious nature can grow out of proportion to the rest of the psyche. In some instances, this might be a beneficial development. Those who compose melodies might need to unlock a feeling to create the tune. Those who work with sick children need to function with a high level of compassion in an emotionally charged environment. But in other situations, psychological stress can cause a great imbalance in the psyche or life-style. Individuals in these situations might feel immobilized. Some are not able to function without the support of a therapist, and difficult emotional problems and anxieties can get worse during this year. Strong feelings drown out reason, especially if Mercury is conflicted in the solar return chart.

Jupiter in the 12th is like an "ace in the hole" and those having this placement may actually have it better than is readily apparent. Despite what is implied, things cannot be as bad as they say. For some the ace is a belief in God as a universal protector. Optimism and a divine sense of protection cloak all fears and give great encouragement. Jupiter points to the development of real faith, an empathic connection to the Oneness of life, and a confident trust in the Ultimate Good. Inner states associated with meditation, spirituality or religion may be particularly comforting. But keep in mind that both the use and abuse of spirituality can be seen with this placement. One is able to twist ethical situations and misuse spiritual concepts for the sake of personal gain. This is all done quietly, behind closed doors, and the truth might never be known. The end can justify the means and in this case the ace in the hole becomes the last laugh.

At some point, those activities and processes kept behind the scenes can become a reality. Problems can intensify, but generally, once things start to move ahead, it is a rewarding time and

you might wish to initiate beneficial events once you feel things start to move.

SATURN IN THE SOLAR RETURN CHART

Saturn rules reality and the reality of any given situation is that we are all ultimately responsible for creating our own lives. The responses and choices we make to any given situation, together with the fears we avoid, form the backbone for our pattern of living. Only when we accept the responsibility for creating our own fate can we be freed from the necessity of living it. Only when we face our fears can we live unafraid. Saturn is the key to this change in orientation. It is the ultimate reality, the ultimate fear, the karmic avenger, and ruler of the universal laws of nature. It is through Saturn's house placement that we come face to face with ourselves, the structures, and limitations of reality, and the laws we must live by.

Growth is a complex process, occurring in a variety of ways. Saturnian growth begins by recognizing the existing structures we have incorporated into our lives, and possibly, the frustration or limitation caused by this edifice. It seems strange to talk about growth in terms of limitation, but astrologically Saturn rules structures which are at one point protective and at other times restrictive. Like the lobster or crab which sheds an outgrown, protective, hard shell in order to grow, individuals must periodically shed old structures grown restrictive with time. As with the crustaceans, the shedding process may be slow and laborious, followed by a period of extreme vulnerability until the new shell has formed and hardened into a protective structure. We often complacently mistake familiarity for security. We assume we'll be safe as long as we stick with the same old routine and keep doing what we've been doing all along. But what was once protective and safe eventually ends up inhibiting our evolutionary cycle of growth. Sometimes, only our frustration with things as they are awakens us to the need for change.

The movement of Saturn through the solar return chart coincides with an awareness of structure. Sometimes this awareness is associated with frustration, and the accentuation of

restrictions now blocking evolution. It is through this realization process and frustration that we first become aware of the need to grow beyond our present structures. Therefore, the first step in the Saturnian process toward growth is recognizing structures, frustrations, and limitations imposed by our present patterns of living, particularly in those areas of life signified by Saturn's house placement in the solar return.

The second step toward growth is reassessment of the situation. A review of the facts yields further information, options, and understanding. Only by defining the inhibitors to the evolutionary cycle can we move toward resolution and continued growth. Self-criticism and constructive feedback from others may be appropriate at this time.

It is during the reassessment process that the reality of our situation becomes more obvious, as well as the laws by which we are governed. To succeed, we must deal with life realistically. We cannot twist nature to our own liking, nor can we expect others to compensate for our deficiencies and fears by solving our problems. Saturn rules the naked truth devoid of magical thinking. We must live within the laws of nature to succeed and survive. If you hate your job, quit. Do not wait for an act of God to find a new job. If you want to complete a major project, work on it. It is the only way it will get done. If you want to lose weight, diet, and exercise. Hard work and facing the issues head on will get you where you want to go. Wishful thinking will not.

These issues are all totally within your range of control and you are free to act upon them, but other problems may not be yours to control. You cannot make your husband stop drinking; you can only change the way you handle the situation. You cannot change hypocrisy in others; you can only reassess your own beliefs. During the reassessment process, develop realistic options which could feasibly lead to a resolution of the problem or to a change in the way you handle the problem. Successful solutions are those which are practical and realistic -that is, they conform to the laws of nature.

Once you understand the problem and the options available, you must assume responsibility for the outcome. Each man or woman contributes to his or her own fate. As the partial creator of any problem, you also have some control over the solution. But assuming responsibility for your present situation can be more threatening than blaming others. Some prefer to buck the system (defy the laws of nature) and complain, rather than take action. Remember, familiarity breeds a false sense of security and many prefer to hang on to their restrictions rather than venture into the unknown. They learn to live with their frustration rather than grow beyond it. Consciously making a decision implies assuming responsibility for your success or failure.

Facing your fears concerning success or failure is ultimately what Saturn is all about. At this point, you are very aware of the reality of your situation, and you have a list of options for the future, not all of which may work. You understand your own contribution to the situation and what you must do in order to move toward a resolution. You have seen your own shortcomings and become aware of your darker side. You comprehend the laws of nature relative to your situation and know everything is earned in this case, nothing is given, and nothing is guaranteed by the Universe. You now realize that you must stick your nose out and take a calculated risk. In order to progress, you must face your fears, and move toward your nightmare rather than back away. It is only by passing through a period of vulnerability that one can break out of a protective, yet restrictive structure and progress into a more suitable environment. You give up the security of the familiar and step into the unknown.

The test of any solution is that it works. Even chronic problems need to be solved and not just cosmetically concealed. Success requires much hard work and the systematic testing of solutions until the correct combination is found. Consequently, success may not come easily. If the first solution does not work, you must go on to test another and another. Thus with each failure begins a new cycle of awareness and reassessment, ultimately leading to a well-deserved success. There is plenty of room for hard work, discipline, and perseverance in the area of life indicated by Saturn's house placement. Eventually, every area of life will be touched by the need for reassessment and

resolution. Chances are the time for reevaluation coincides with Saturn's placement in a particular house of the solar return. In that area of life, you must go above and beyond what is normally expected.

Solar Return Saturn in 3rd house:

Saturn in the 3rd house indicates a year of much study or mental work. You take your studies seriously and knowledge is probably crucial to what you hope to accomplish in the future. This is an excellent time to concentrate on difficult mental tasks or complex topics of interest. You can be involved in a major project or course requiring concentration, persistence, organization, and many hours of work. Typical commitments include taking a course, organizing community projects, formulating new ways of thinking for yourself and others, writing a book or paper, studying for qualifying examinations, or consulting with others on a regular basis in order to gather new information and insights.

You may finish your endeavor during the year, but if Saturn falls in the 1st house of the solar return chart next birthday (which is most likely to happen), your work will probably require another year's effort. (Saturn in the 1st house is commonly associated with the completion of a long-term project and is a good placement for those interested in focusing on a major achievement.) Your mind is constantly at work and it is best to choose a positive focus. If you are studying, learning or working on a major mental task, you will be less likely to feel depressed or anxious. You need a strong mental focus this year to use up excess mental energy.

Major decisions usually arise during the year when Saturn is placed in the 3rd house of the solar return chart. Responsibility to yourself and for another person is commonly a factor in the decision-making process. You may be making a decision for two and not just for yourself alone. Dilemmas are common since your needs may directly conflict with the needs of your counterpart. Reality assessment is crucial. You must realistically weigh and evaluate all the intricacies of your situation

and actively search for options. Options are important, but unfortunately, looking for new possibilities is an insight most people tend to miss when dealing with tough issues and this Saturn placement. Rigidity of thought is a common flaw. Your accurate evaluation clears the way for the most successful resolution of your problem, even when there can be no clear-cut success. If you are mentally stressed by the problems you must solve or the decisions you must make, it might be in your best interest to discuss issues with someone who is impartial and not threatening. Seeing a counselor at this time can help you to do this. Your insight should be increased through the interchange.

Your inability to see positive solutions and options to your dilemma can lead to depression. Depression is sometimes associated with Saturn or Sun placements in the 3rd house of the solar return chart. (Severe depressions are more likely with the Sun.) Depression is the mind's way of calling attention to what needs to be corrected, decided and surmounted. Depression can lead to positive results when it is used as an early warning signal and learning tool. Life is a growth process and depression can indicate your inability to seek and find newer, more mature ways of handling situations. Depressed individuals need to begin to solve some of the problems they are faced with. They should do something-anything! They also need to get in touch with their feelings and learn to communicate those feelings effectively to others. Information blockages are likely and either you cannot or will not discuss things openly. Isolationism is commonly generated by the issue or problem you are facing. If you are unhappy with your present situation, it is time to face the problem and begin to make informed decisions. If you avoid issues and responsibility, your depression can grow deeper and become more obvious to others. You will seldom praise and often criticize; your speech will become caustic. Situations will seem hopeless. Your level of activity will slow down and eventually you will be perpetually tired. As you withdraw from others, effective communication will become extremely difficult, if not impossible, to maintain.

Everyday situations can become everyday hassles that get on your nerves. Common daily occurrences are more difficult to weather. It's the little things that bother you and seem more

troublesome this year. What used to be simple is now more complex, and day-to-day things that need to be done take longer. For example, if you move to a foreign country and you do not speak the language very well, handling common chores such as shopping for food, cashing a check or going to the post office are laborious until you get the system down. Similar situations are associated with new babies, living in a dormitory or alone for the first time, moving to a new location and various other common life experiences.

Problems with siblings are possible during the coming year. You may have a problem relating directly to a family member, but it is more common to have a brother or sister with a problem or issue he or she needs to handle. The encouraging side of this Saturn placement and interpretation is that the problem is being confronted. Usually this is the year your brother or sister begins to handle a situation in a responsible manner. For example, if your sister is an alcoholic, and has been for years, she could decide to enter a rehabilitation program at this time. Your contribution during the year is to support her decision and help her in any way possible. You may wish to join a program which will help you to better understand her situation and your role in her successful treatment.

If your sibling refuses to confront the issues, this can be a time when you feel forced to act on his or her behalf or completely alienate yourself from the situation. Problems need not be very difficult and can be relatively minor with this Saturn placement. Productive siblings will not suddenly have major problems or behave totally out of character. The best predictor for the future is past experience. Problems which may arise will be consistent with your sibling's normal personality, and may mark a turning point in life. This is a time when your encouragement can be very supportive at a crucial passage.

URANUS IN THE SOLAR RETURN CHART

Uranus is commonly seen as an indicator of change, and this is true for the solar return placements also. Conditions associated with the house position of Uranus are likely to evolve

significantly over the year. Major changes or incessant fluctuations emerge as the pattern of manifestation, depending on how the individual copes with his or her situation and needs. Transformations may occur quickly and require a long period of adjustment, or progress slowly, possibly occurring late in the year and only after a long period of anticipation or restlessness. As a rule, most changes are expected, predicted, and initiated by the native him or herself. Many are carefully planned and well executed, involving a minimum of tension and anxiety. When working positively with the Uranian principle, the key is in the restlessness. Those who are very attuned to their own need for growth will feel the restlessness arising in outgrown situations and respond accordingly. They will welcome the opportunity for adjustment, and make all the necessary preparations for the coming change. They will not lock themselves into one particular situation or pattern of growth, but will allow changes and insights to develop and evolve naturally along the way.

Generally, it is only when the individual thwarts his or her own desires or tightly controls situations that tensions manifest in the form of anxiety and nervousness. This anxiety results from ambivalent feelings which develop in those who resist needed changes. These people get caught between their own fear of change and a strong desire for the very change being thwarted. An ambivalent mind-set takes over, one built on an approach to, and also an avoidance of, a set goal or change. Remember, Uranus is associated with conscious and unconscious choices for change. Its appearance somewhere in the native's solar return chart implies the area of life in which the individual desires to progress through change. When one is unable to face or effect needed and desired changes, the mind splits between two mutually exclusive goals and anxiety results. Eventually, the mental ambivalence and erratic commitments to two very different paths are reflected in fluctuating external conditions. Long overdue, yet still avoided changes, tend to manifest in the environment as disruption caused by others, or by neglected areas of attention.

Adding to the anxiety is a perceived loss of control over external situations. Eventually, the restlessness and tension rise to a feverish pitch until one finally agrees to make changes, or can no longer prevent their occurrence. When conditions reach this intensity, individuals usually make

reactive changes, without careful consideration or adequate preparation. Sudden upheavals occur rather than welcomed transitions. If we would truly be in control of our own destiny, we should listen to the need for change and respond to the earliest hints of restlessness. We should give ourselves the freedom to work toward a conscious transition before a crisis arises.

Consistent with the desire for change is the need for freedom. You cannot maneuver if you are locked into a restrictive environment. Sometimes the push for freedom is a prerequisite for change. At other times, the change itself becomes the motivating force behind the process. Occasionally, both mechanisms are operating. For example, you may have to convince your boss to give you the freedom to make needed changes in the daily office routine; at the same time, the changes you make could streamline procedures, creating more leeway in your work schedule.

Freedom allows the process of change to occur smoothly. When we are functioning at our best and working positively with the Uranian concept, we move easily through a series of attractions, detachments and independent actions. We learn and grow from each of these encounters. While in the process of attraction, we are drawn to certain situations, persons or concepts. It is important to observe what experiences we are drawn to because they indicate conscious or unconscious needs and patterns of growth. By accepting different situations, interacting with different individuals, or listening to new ideas, we take in new information and learn to value various facets of life. We see that no one person, place or idea is perfect. The same is true of our existing circumstances, which we hold onto so tightly.

With this insight begins the period of detachment from those situations, persons, or concepts which restrict our growth or no longer have anything to teach us. We are able to step back and intellectually reassess our involvement and commitment. We can either choose to separate physically from difficult situations, or take the corrective action needed to adjust present circumstances to our needs.

Uranus does not always imply a complete and total separation. We are capable of detaching from the original attraction while still maintaining the experience, relationship, or train of thought. It is the independent action we ultimately take which defines the degree of separation.

We learn as much from separation as we do from attraction when we define what we don't like as well as what we do like. The changing environment, the comparisons and contrasts, accentuate what is important and what is not. One should remember that this process of change through attachment, detachment and independent action is ongoing, occurring on many different levels simultaneously. The process can be either quick, occurring numerous times in one day, or drawn out, requiring a year's time span. For example, suppose you are building a new home. This is a year-long project and during this time you will be drawn to many different construction plans, ideas, and subcontractors. But as you begin to work with the possibilities, you will accept, reject, or change options to suit your needs. This process takes place over months, but also simultaneously many times in one day.

The exposure to various ideas, situations and people stimulates creative thought through sudden insight into changing situations. All planets represent a creative process. Venus is the planet of creativity experienced through beauty, while Uranus is the process experienced through change. Because of the changing panorama of people, ideas, and situations, one becomes accustomed to looking at life from different perspectives. The multifaceted approach encourages the mind to create still newer ideas. In this way the individual begins to participate in the process of attachment, detachment and independent action by creating his or her own original options, and change becomes a process of perception, integrated into the pattern of growth.

Solar Return Uranus in 7th house:

The primary interpretation for Uranus in the 7th house focuses on changes to relationships. Depending upon what you are used to, relationships can change in a number of different ways. If

you are not in a major relationship or have not been up until this point, this can be a milestone year for you, one in which you change your style of relating and push for greater intimacy. Sudden attractions are possible and the person you have your eye on may be quite different from what you would normally expect. Attractions can be very exciting, but also unpredictable. Patterns of relating tend not to be soothing, but somewhat disruptive. It may be difficult for you to depend on the person you are involved with, since he or she will not want to be tied down at this time. Freedom is an issue for both of you and togetherness may be on-again, off-again. Marriage is probably not an option during this year, though you may live together.

Existing relationships may go through a period of transition because one of you wishes to make a major change or needs more freedom of movement. Usually the freedom to make a major change is sufficient, but sometimes the push is stronger. Although separation may be indicated by Uranus in the 7th house, it is more commonly associated with Uranus in the 4th house square to the Ascendant-Descendant axis. Separations in consciousness are frequent with Uranus in the 7th house. If your partner is working on a major project, he or she may seem detached and preoccupied, or extensive travel may be a job requirement, taking him or her away for part of the year. On the other hand, you might be the preoccupied or busy person. It is common to be separated for short periods of time for one reason or another. Perhaps one of you is married, lives out of town, or is busy with school, work or other activities. Changes directly affecting you can come through the spouse, lover, or business partner. For example, the person you are living with relocates and you must decide to move also or separate. It is also possible for you to instigate changes on your own.

In both new and old relationships, a lack of true intimacy is a frequent complaint. Connections might seem distant, commitments erratic. A conflict of interest is possible, especially if there are squares or oppositions to Uranus in the 7th house. It is normal to experience some relationship oscillation during the year. Changes sometimes necessitate a disruption of the intimacy routine and flow, but some couples move closer as they grant each other greater freedom of movement or expression. This is a time to become a friend to the person you are closest to. Distances will be more

evident and serious in difficult relationships, but good relationships will survive and grow from the transition.

NEPTUNE IN THE SOLAR RETURN CHART

Neptune is many things on many levels, but first and foremost it is the aspiration for a higher manifestation as opposed to a lower one. The distinctions between higher and lower influences are not limited to the spiritual plane alone, but can occur on the emotional, mental and physical levels also. At all times, it is up to the individual to steer his or her consciousness toward the highest manifestation possible. For example, Neptune on the spiritual level is associated with Universal Oneness, Karmic Laws, Ideals, God, and higher beliefs which form the backbone of spirituality. A strong sense of trust in God and the Universe supports the growth process on the spiritual level, but has ramifications on the other levels as well. Each level of experience supports and triggers the others. It is all the insights on all of the levels which eventually help us toward a more rewarding and fulfilling life-style. The lower manifestation of Neptune on the spiritual level is disillusionment with higher principles. Here the individual falls off the true path and becomes entangled in fanatical beliefs or outright fantasy. Spiritual despair rather than enlightenment is the result, and the support needed for growth on all levels is thwarted.

The same dichotomy of higher and lower is present on the emotional, mental and physical planes also. At the emotional level, the individual is capable of great compassion and sensitivity to others. This is a time when empathic understanding strengthens the bonds between loved ones. The lower manifestation of Neptune is a susceptibility to anxiety and worry. The sensitivity which is meant to foster true understanding instead heightens a sense of vulnerability to life, others and the future. There is no trust in God emanating from the spiritual level to support decisions. In negative situations, true understanding of others does not develop because the individual is too involved with personal feelings and issues to focus on others.

At the mental level, creativity and inspiration help to expand the individual's intellectual capacity. Neptune is more closely associated with the right brain than the left, and indicates the ability to let the mind float free to new and better insights. The lower manifestation is confusion and deception. What you are told is different from what you intuitively feel. Thoughts contradict insights and you are unable to comprehend the truth. There is no trust of the higher right brain inspirational or spiritual processes. Creativity is thwarted. Without an understanding of the big picture, mental energy is wasted through a lack of cohesiveness as one begins to focus on the insignificant, confusing details.

And finally, Neptune on the physical level is service to others. Principles which have filtered down from the various levels and have been understood in each of the higher manifestations begin to flow into daily practices on the mundane plane. There is a consistency; as above, so below. It is possible to physically manifest the spirituality to which you aspire. When only lower manifestations have filtered down to the physical level, confusion, disorganization and exhaustion are most apt to occur. You lack a total concept necessary to unify your actions and prioritize tasks according to their importance. Neptune at its highest level of manifestation on the physical plane is a direct reflection of the enlightened promise made at the spiritual level.

In all of the houses, either the higher or lower manifestations will be operating. The more the individual focuses on the higher energies, the more cohesive and insightful actions will become. The more the individual is sensitive to spiritual insight, the easier it will be to deal with issues on every plane. The unifying principles of the spiritual level and the higher manifestations combine to focus energy and understanding right on down the line.

Solar Return Neptune in 6th house:

Neptune in the 6th can mean working at a job when your heart's not in it, or when you really have no sense of direction or purpose. Most commonly, you are in a period of transition between

jobs. You are in the process of finishing up an old job, business or career, and moving toward a new professional endeavor. Usually there is an overlapping period when you are not physically through with your former job even though you are mentally finished. Mentally, you are now involved with your new position even though the physical transition has not yet begun or been completed. So you are just marking time, picking up a pay check, or existing in limbo until everything is set for the transition to be accomplished. It is unlikely that this will occur until the end of the solar return year, or until Neptune transits out of the 6th house, unless your new position is as probationary or "iffy" as the transitional period itself. Becoming self-employed generally falls in this category. A need for job fulfillment pushes you to find a more suitable position. The job you are leaving might fall short of your abilities. You may not feel as helpful or as effective as you could be if given more opportunity. Misunderstandings between you and your employer are possible. A few individuals might be unemployed or drifting from one job to the next during this time.

Assuming you are happy with your present employment situation, this can be a time of job confusion or uncertainty. New office procedures might turn your workday upside down if inadequate training leaves you unsure of what to do. Job security in your present position can seem precarious. Rumors of layoffs, mergers, relocations, or shift changes are possible. Poorly defined threats to your job are likely, but generally there is no loss of position or employment time. Coming reorganization plans leave future responsibilities undefined and you might be unsure where you will be in one year's time. Or you could be involved in a project which has an indeterminate outcome. You and the others could risk your time and effort on a long shot project you are not sure will pan out. If you are the owner of a business, you may be considering a merger, buyout, partnership or stock option. You will find it difficult to make concrete business plans for the future until certain issues are settled. Misunderstandings with others can occur during the year regardless of your level of employment. It is to your advantage to communicate directly with business associates. Do not rely on intermediaries to convey your messages.

Illnesses and diseases, if they occur, tend to be more difficult to diagnose while Neptune is in

the 6th house. Generally you are the person seeking diagnosis, but if you are responsible for a child or an elderly adult during this year, it is possible that the vague and undiagnosed health problem is his or hers rather than yours. The health provider may be baffled by the symptoms and recommend several different courses of treatment. He or she may not be sure exactly what will work. The tendency is to try one method first, and then move on to another form of treatment if needed. A second opinion might be advantageous. You can be successfully treated without ever really knowing what you had. The origin of an illness needing diagnosis and treatment may not be clearly understood for most of the year, or until Neptune transits out of the 6th house. Symptoms are generally vague, conflicting or intermittent. Complaints of tiredness are common. A case of the flu might hang on longer than expected, or leave you feeling less than "right." Allergies to smoke, aerosols, pollutants, medications, and foods are more likely to affect your life-style or diet during the year.

The increased sensitivity associated with Neptune is apparent in the physical body's acceptance or rejection of certain daily work, living or eating habits. Emotional upheavals and stress are more apt to affect your physical form and aggravate existing illnesses, causing symptoms to reappear or multiply. If stress is coming from your job, realize that health is more important than work. Spiritual beliefs and attitudes need to become a part of your daily routine while certain detrimental habits fall away. If you cannot maintain a spiritual perspective during your daily routine, it may be time to change the routine. Cultivate serenity.

PLUTO IN THE SOLAR RETURN CHART

In the solar return chart, the interpretation of Pluto includes an understanding of the issue of power and its various manifestations, which can be directed toward three different points of focus and through three different life processes. Complications are associated with all of these orientations and processes since each manifestation is multidimensional and complex, occurring not only on the physical level, but on the intellectual, emotional and spiritual levels as well. Within these complex

situations, power can be focused on three different targets: the self, others, and/or circumstances. As a rule, the power to control oneself is mostly beneficial, the power to control others is mostly detrimental and the power to control situations varies according to the circumstances involved. By studying Pluto's house placement in the solar return chart, you can assess in which areas of life these control issues are most likely to arise. The scope and effects of the power issues are seen through the connections to other solar return planets.

Power also manifests through three different processes. One may choose sameness, elimination or transformation. When you choose to keep things the way they are, it is implied that there is some force urging you to change and you are resisting this force. A possible power struggle might ensue. When you choose elimination, you relinquish control over some facet of your life or refuse to have further contact. When you choose change, you may be either yielding to an outside power or actively seeking transformation of that which already exists. Let us explore the power orientations and processes further.

Three Different Points of Focus

Generally, the focal point of self is beneficial. As long as you are using Plutonian insights and techniques to control yourself, to own your own power and to further your own growth, the process will be a positive learning experience, unless you overcontrol yourself, succumbing to hair-shirt asceticism, taking self-denial to absurd extremes. The greater your awareness of yourself and Universal principles, the more likely you are to make good decisions. You become the captain of your own destiny. Enlightenment leads to power and power leads to enlightenment as a rewarding cycle of manifestation is set in motion.

However, those who use psychological insights to control and block their own growth waste precious energy. They set up a negative pattern of stagnation wherein insights are not accepted as they are, but twisted to fit previously conceived notions about life and self. Rather than progressing

through enlightenment, the individual uses insights as weapons against growth and understanding, opting for sameness despite new information. Contradictory realizations are not allowed to surface; instead they are either suppressed or misinterpreted. In very negative situations such as these, the power associated with increased Plutonian awareness and its creative potential is never realized.

The same thwarting of personal growth is evident when you shift your attention from self to the need to control others. By and large, this is not a good focal orientation. The symbolism of the planets exists in your consciousness so that you can grow and prosper from insight. Since growth begins at home, the main thrust of the focus should always be toward self, and it is generally unnecessary and also counterproductive to shift the emphasis to an external struggle. The most efficient use of power exists on the internal plane because it takes much less energy to control your own reactions than to seek power over someone else. Once power is removed from the inner self and used to control others, the effectiveness is reduced. Stalemated power struggles are particularly detrimental because they deplete resources. It is conceivable that there are life situations where it is essential to control another person. For example, children, disabled or elderly loved ones may not be able to make informed decisions. In these situations you might be asked or forced to wield power over another. You are meant to grow from all your experiences. Even in these instances, self-awareness and insight are crucial to the decisions you make. Start with yourself first, then work your way outward. Blaming others for your problems distorts the perception of self and the realization of your own personal involvement. Always be aware of the interactive process and the role you play in it. This internal perspective is of primary importance, much more so than the process of controlling someone else.

Trying to control life situations can lead to power struggles, but at some point in your life it may be essential to make a stand for the good of your own growth or that of world consciousness. Ultimately, it is much better for you to control yourself, but this is not always possible. Someone can be seeking to control you, your family or your livelihood. Certain injustices must be corrected for everyone to progress, and sometimes the only viable option is to work for change. Always be aware of

the struggle you take on. It is usually easier to correct a situation than to convince your opponent he or she is wrong. It is easier to get forgiveness than permission. Go for the simplest task that gets the job done. For example, your office routine might be very inefficient and next to impossible to accomplish in a day's time. Perhaps you see where improvements can be made, but your immediate boss disagrees with you or thwarts your efforts. As long as you continue to try and convince your immediate boss of the need for change, you will get nowhere. If you can easily go over his or her head to a higher boss, this could be an effective way to handle the stalemate. Seek the quickest solution to a problem if one is available. Do not get locked into long, drawn-out struggles if they are not necessary.

Ultimately, power struggles can have either beneficial or detrimental results, depending on your perspective. In the external environment, you may or may not win, assuming there can be a victor. More than likely, victory, if it comes, involves compromise for all involved. But the inner process of awakening one's own ability to effect a creative change in the environment is usually beneficial. You can make a difference. The creative potential associated with Pluto comes from a penetrating insight into the hidden worlds of the unconscious and an understanding of the Universal laws of Karma. Powerful insights should spring spontaneously from the situations associated with Pluto's placement in the solar return chart. Suddenly you can become aware of new forces, subtle and previously unnoticed, which seem to influence personal decisions and situations you are involved in. Once you have the insight, what you do with the information becomes crucial to the creative process.

The primary goal of the Plutonian process should be growth through awareness. Therefore it is essential, no matter what your focal orientation, to use information and insight gleaned from experiences to foster a new understanding of self and Universal principles. The main growth process begins and ends with the self.

Three Different Plutonian Processes

Plutonian power is associated with three different processes: keeping things the way they are, usually by resisting an internal or external force; changing the form of what already exists, i.e., transformation; or eliminating what is no longer useful or essential, a form of death. Any of these powers can be either beneficial or detrimental to the user or others involved. It is the purpose and intent of the process that is important.

The power to keep things the way they are can sometimes be an awakening to personal power. Implied here is a resistance to a force seeking change, and sometimes the intent of change is negative. The pressure can come from an external or internal source, and the changes desired may be either external or internal also. For example, if you are a recovering alcoholic facing a difficult life situation, you might feel the pressure to start drinking again. The pressure could come from your own wish to avoid major decisions, or from a person you are associating with.

In actuality the internal and external sources are really one and the same, a reflection of each other since internal needs draw external situations. In the situation given above, the individual seeks to remain a recovering alcoholic despite internal and external pressure. This is a positive goal and if attained, implies personal power. It is also beneficial to remain the same when others seek to control your actions and thwart free will. Pluto represents the insight necessary to perceive manipulative efforts as they arise and avoid ploys whenever possible.

In some instances, the power to remain the same can be a negative manifestation, actually causing the stagnation of growth. If you resist all new internal and external insights which would enhance your growth or cause you to make changes, little progress will result. You will stall. When your purposes are not in keeping with Universal Good or personal benefit, you are more likely to be involved in a negative use of Plutonian power.

The process of elimination can be very cleansing, even though a symbolic death is involved. If you streamline your business or office procedures, letting go of compulsive and unnecessary

activities, this is a death of sorts, but much to your benefit. So is a budgetary review which eliminates the fat from your spending practices and allows you to cut back on your work schedule. In more serious circumstances, perhaps all you can do is release a situation that is detrimental to your progress. Letting go can be a positive choice, but it might also be a negative one if you cut someone out of your life without resolving or releasing the conflict. If this is true in your case, avoiding persons or situations will consume your energy. Transformation is the process whereby a situation, thing or level of consciousness is changed into a new, and hopefully higher, manifestation. Careers, marriages and self-images can all be transformed for the better. Commonly, though, we think of the transformation process in terms of psychological insight and level of consciousness. Information from subtle sources or the unconscious is gradually or suddenly made available to either the rational mind or the Higher Self, and subsequently a change occurs on the mental, emotional or spiritual level. Information that was previously unavailable becomes understandable through the process of insight, and power is released through new awareness. This can be a very enlightening and beneficial transition, but naturally it is what you do with the information that is important. If intellectual, emotional and spiritual growth are triggered by the new awareness, the process continues to be positive; however, if instead you use your newfound insight to control others or block growth, you have used your knowledge in a negative way.

Misuse of the Plutonian process creates an inability to continue on the life path until issues are resolved and lessons are learned. Stagnation occurs as the individual fails to progress to the next level of comprehension or misinterprets the task at hand. Power struggles can be the cause of such stagnation, and should be taken on only after careful consideration of the issues and implications. Power struggles are expensive in terms of time and energy. Some are essential to growth, others are self-inflicted. Know the source. Ideally, if you avoid a conflict in Pluto's solar return house placement, you should have more resources available for higher awareness. Conflicts consume energy and sap the strength necessary for the ascent. Without opposition, one can move quickly when concentrating on insight and awareness. Barriers can be torn down and the connections among all things become apparent.

But a world without struggle is the ideal, and not necessarily the reality. Your situation may require that growth be attained through struggle. The resistance may stimulate your awareness and creativity. Real progress might only occur after the resolution of conflict or during respites in the battle. However, within a long-lasting, stalemated struggle, one is more likely to get caught in a circular argument going nowhere. Nonproductive battles can be avoided by those who work toward increased awareness.

Solar Return Pluto in 4th house:

Pluto in the solar return 4th house is the single best indicator of moving from one home to another. Uranus in the 4th house can also indicate relocation, but when Uranus is in the solar return 4th you are more likely to have changes or disruption within the domestic environment, particularly involving family members or roommates. Pluto, on the other hand, is more representative of moving from one home to another, or major renovations to the living structure itself along with a disorientation or upheaval that lasts for a period of one year. These are fine-line distinctions, and of course, variations will occur. If you purchase a home during this year, it may need a lot of work. Redecoration is likely, and the repair of unforeseen problems a possibility. It is in your best interest to have an engineer inspect any home you are seeking to purchase. Hidden or unanticipated difficulties can then be made known before any transaction takes place.

Relocation complications can arise for a number of reasons, though, and are not limited to repair problems. If you are building a new home, construction can take longer than expected. You may have to live in several temporary residences or stay with relatives for a period of time. Once you finally move in, you must decorate from scratch, purchasing everything an established home is already likely to have. Moves over great distances are very complicated in and of themselves, and generally require a full year's time for preparation and settling in. The hassles of adjusting to a new state, climate, culture, or environment can take the place of problems with the house structure itself.

Major renovations are also seen while Pluto is in the 4th house. These kinds of renovations necessarily cause a prolonged upheaval in the domestic situation. Large additions, modernizations, or construction which involves moving walls or piping is likely, and the disruption caused by the dust and building will probably last for most of the solar return year.

If you do not move or renovate, it is still likely that changes in the domestic situation will occur. Commonly, someone either moves in or out, and living arrangements must be adjusted accordingly. New situations will take a while to get used to. All changes involve the consideration of many different factors, and simple decisions are not likely. In addition, transitions are likely to be complicated by psychological issues, and may even be unconsciously motivated. For example, your mother moves in and you must make arrangements for her to get to the senior citizen center during the day. She is somewhat incapacitated and needs daytime care. She also requires a living space on one floor and you must rearrange rooms and put in a new bathroom for her use. Psychologically, you must make the adjustment from living alone to caring for an elderly parent. Certain childhood issues might arise as you search for new patterns of behavior.

It is true that complications and struggles are associated with domestic situations when Pluto is in the 4th house; however, the complications and struggles are inherent in the project or transition you wish to complete and not the planetary placement itself. This is a time when individuals naturally seem to choose to make major changes in their home and/or living style, and it is unlikely that a transformation of this caliber could be made quickly and easily, without some hassle.

The desire to make strong and sweeping changes in the physical home is accompanied by corresponding emotional transformations. Sometimes the two manifestations are directly connected; sometimes they are totally separate; commonly, they are at least symbolically related. For example, during a long period of domestic upheaval, you could feel disconnected or not grounded, without a sense of "home," or a base for operations. If you are living with others, caught in a limbo between

residences, you might be forced to subsist for a while without your own space, possessions, privacy, personal control, or sense of organization. You might feel stripped to the essence of your being, devoid of any external trappings, left to exist as you are, without the familiarity of what you own or can accomplish. Without the inner sanctum of your home for protection, you could feel exposed, and it is true that you are vulnerable to the idiosyncrasies of temporary housemates. Emotions are bound to fluctuate under such conditions. Old behavior patterns break down quickly as new patterns and coping mechanisms are necessitated by changing circumstances. In this way, Pluto in the 4th house usually indicates an emotionally unsettled time, as well as a physically unsettled time.

Sometimes this emotional upheaval can occur because of a coincidental physical change in another's situation, but a transition in the native's own consciousness is essential for growth. Suppose your parents decide to sell your childhood home and move out of state. If you are still attached to your parents' residence, you must make adjustments in your thinking. You can still visit your parents, but you can never go home again if the trip involves one particular building or location. Perhaps it is time for you to think of your own residence as "home."

When Pluto is in the 4th house, emotions are not only the motivating force behind physical changes, but also the end result. The purpose and desire associated with this placement is the need to establish an emotionally fulfilling environment, both on the internal and external planes. This is why moving or changes in the physical home (external) are as important as evolutionary growth in the feeling nature or unconscious (internal). The two levels of manifestation go hand in hand during the year, and you can be sure that if your physical surroundings are in a state of transition, corresponding changes are also affecting your emotional level.

By the same token, the inability to make wanted and needed external changes probably indicates the presence of internal blockages and external resistances. A search is underway to form stronger roots in the physical and emotional environment. Shallow connections will not do. One must either dig deeper or move on; reaffirm the commitment to the existing structure (renovation),

or begin anew (move). The same process is occurring on the emotional level. Individuals must reaffirm a commitment to family members and roommates, or seek support elsewhere.

Unlike other 4th house placements which also indicate changes in the physical and emotional home, Pluto generally indicates that not only are changes long overdue, but there are also some inner and outer resistances which must be overcome to fully realize the internal potential in the external world. Consequently, a power struggle with oneself and others is likely, both before and during change, and the arena for this struggle takes place in the home and among family members. Conflicts arise when others do not want the same home environment you envision. In the best of circumstances, negotiation and compromise may be all that are necessary to resolve differences. However, in some families the word "negotiation" is really a cover for manipulative tactics and controlling influences. Nothing is ever resolved, issues remain unsettled, and decisions are not finalized. Within this domestic milieu, the creative urge toward rootedness and its resultant manifestations on the physical and emotional planes are stifled before they can be realized. For this reason, you should consciously work to undo old, existing response patterns which allow others to psychologically control your emotional nature and rob you of its creative potential. Being emotionally controlled is generally synonymous with also being physically controlled, and therefore unable to create the home and home life you desire.

This is a good time to enter therapy, especially if unconscious manifestations (fear, guilt, negativity, power struggles, etc.) are blocking new and old commitments, or stifling your urge toward growth and change. Repetitive issues, unfulfilling emotional interchanges, and the inability to cope with your home and necessary changes signal the need to reassess response patterns for power leakages. During the year, heightened sensitivity will cause you to become aware of psychological games which rob you of personal power in the emotional arena. At this time, even an intellectual interest in psychology can give you great insight into domestic and familial patterns.

Because of the issue of creative emotional power and its manifestation on the physical plane, life

seems more crucial, decisions more important, problems more complicated. Everything leads to something else and you have a vested interest in how matters finally turn out. Commonly, the meaning of life is discussed, and within this climate the issue of death arises, causing you to face the issue of your own mortality. There may be a death in the family during the year, but more often you are merely acquainted with someone your own age who must deal with a potentially life-threatening illness. His or her situation calls you to consider the possibility of your own death, and the reason for your existence. The interplay between the creative emotional nature and the issue of mortality leads you to understand the extent and limitations of your own power. One does not have control over death; all living things die. However, one does have power over the emotional response to death, and for that matter, all emotional responses. The need to direct your own emotions toward a rewarding and fulfilling expression is at the root of this Pluto placement.
